

SMOK

zmax

User Settings



Zmax is a new intelligent e cig Mod, not only you could adjust the voltage, but also you could adjust the wattage. It could work with one 18650 battery and also two 18350 batteries with extra longer bottom cap. It's a constant voltage and constant wattage new VV Mod.

User's Manual

Zmax Features:

- Zmax can be adjusted from 3.0-6.0V volts in 0.1 volt increments.
- Built-in three digit display allows you to visually adjust your voltage and wattage.
- Zmax could fit one battery 18650 or add holds two specially designed 18350 High Power Batteries, and reverse connect protection.
- ZMax is made of brass or stainless.
- Zmax is with 510 and EGO thread.
- With a maximum output of 15 watts.
- ZMax can be adjusted power from 3.0 --15 W in 0.5 watts increments.
- ZMax PCB allows 4 Amperage output limit.
- ZMax button never get stucked even theres a 360°turnning around

In this guide we will explain how to change settings. It's easy and fun! The menu is arranged in the following order:

- | | |
|---------------------------|---------------------------------|
| 1.Uu --- Voltage up | 7.UP---Voltage power |
| 2.Ud --- Voltage down | PO---Constant power operation |
| 3.So --- Standby on/off | UO---Constant voltage operation |
| 4.Uc --- Battery check | |
| 5.Ds --- Display change | |
| 6.Lo --- Led light on/off | |

1 Uu -- Voltage Adjust Up

- Zmax is a smart microprocessor controlled e-cigarette, that uses the latest technology to allow you to set a range of voltages.
- With its built-in three digital display there are no analog dials or potentiometers to wear out. There's no way to accidentally reset the voltage and you can make changes within seconds.
- Zmax allows you to digitally dial in your favorite voltages on its mini display.
-

Note — The higher the voltage, the hotter the heating element will get!
Always begin at a low voltage setting and increase the power until you are satisfied with the vapor production.

Factory Default is 3.0

Press the button 3 times in a row until 1.Uu is shown on the display

Voltage up

When Uu is shown on the display, leave the button idle for 2 seconds.

The display will change to show the last voltage selected

3.0

Once the voltage is displayed, each time you press the button, the voltage will advance to the next higher setting: 3.1, 3.2, 3.3, etc. You can also hold the button to scroll.

When you reach 6.0 it will rotate back around to 3.0 and go up again.

When you have reached the desired setting leave the button idle for 2 seconds. The setting will be saved and the Zmax will resume normal operation.

If you make a mistake, just press the button 3 times in a row and you will be able to make another change.

2 Ud -- Voltage Adjust Down

- In this mode you can adjust the power down to save button clicks.
- It has the same functionality of the power up except each time you press the button, it will lower the power.

Factory Default is 3.0

Press the button 4 times in a row until 2.Ud is shown on the display

Voltage down

When Ud is shown on the display, leave the button idle for 2 seconds.

The display will change to show the last voltage selected

3.0

Once the voltage is displayed, each time you press the button the voltage will advance to the next lower setting: 6.0, 5.9, 5.8 etc.

You can also hold the button to scroll.

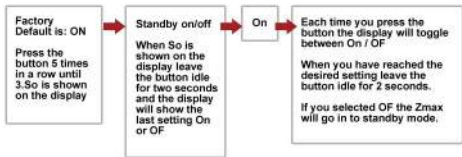
When you reach 3.0 it will rotate back around to 6.0 and go down again.

When you have reached the desired setting leave the button idle for 2 seconds. The setting will be saved and the Zmax will resume normal operation.

If you make a mistake, just press the button 4 times in a row and you will be able to make another change.

3 So -- Standby On / Off

- In Off of the "Standby mode" the Zmax will not activate the atomizer/cartomizer when the button is pressed and you will not be able to change any of the settings.
- This mode is good for when you want to store the Zmax in your pocket or bag and don't want it to accidentally turn on the atomizer/cartomizer.
- Once you have turned the device off, you can turn it back on by pressing the button 5 times to access this menu function again or you can simply remove the battery and re-insert to turn the Zmax back on.



If you make a mistake, just press the button 5 times in a row and you will be able to make another change.

4 Uc -- Voltage check of battery

- In this mode you can check the level of your battery in volts.

Press the button 6 times in a row until 4.Uc is shown on the display.

Voltage check of battery

When Uc is shown on the display, leave the button idle for 2 seconds.

The digital display will show your battery voltage measurement.

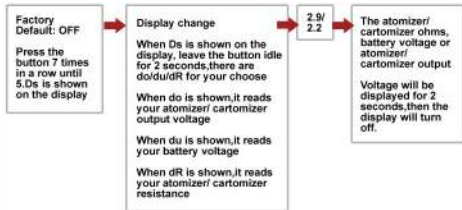
3.2-
8.4

The battery voltage will be displayed for 2 seconds, then the display will turn off.

It's normal for your atomizer to activate at a very low voltage while in battery check mode. This allows the Zmax to check the voltage.

5 Ds --- Display change

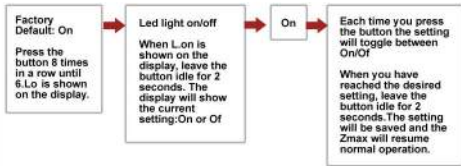
- In this mode the Zmax will read and display your atomizer / cartomizer ohms measurement, your battery voltage and your atomizer / cartomizer output voltage.
- This feature is useful if you want to check what type of atomizer / cartomizer you have installed, and what atomizer / cartomizer output voltage is when the battery is working.



It's normal for your atomizer/cartomizer to activate at a very low voltage while in Ohms mode. This allows the Zmax to check the resistance.

6 Lo --- Led light on/off

- **LED ON** --- In this mode, the push button LED will light up every time you press the button during normal atomizer / cartomizer use. The low battery function will also alert you when this mode is turned ON.
- **LED OFF** --- In this mode, the push button LED will not light up when you press the button during normal atomizer / cartomizer use. The low battery alert will not flash when this mode is turned off.



If you make a mistake, just press the button 8 times in a row and you will be able to make another change.

7 Up --- Voltage Power

- In this mode you can adjust the power down to save button clicks. It's got the same functionality of the power up except each time you press the button it will lower the power.

Default is auto check

Press the button 9 times in a row until 7.UP is shown on the display

When PO is shown, it reads your Zmax constant power operation

When UO is shown, it reads your Zmax constant voltage operation

3-15
Watts

Once the power is displayed, each time you press the button the wattage will advance to the next higher setting: 3.0, 4.0, 5.0 etc.

if your variable power is 10.0w, display show 100 watts, highest watts show 150 means 15w

When you reach 3.0 it will rotate back around to 150 and go down again.

When you have reached the desired setting leave the button idle for 2 seconds. The setting will be saved and the Zmax will resume normal operation.

If you make a mistake, just press the button 9 times in a row and you will be able to make another change.

Error Codes

- LOR---Lower resistance indication;If the resistance is below 1.2ohm,the display will show "Low Load".
 - LOU---Lower voltage indication.If one 18650 battery voltage is below 3.4V or 2 18350 batteries Superposition voltage is below 6.4v,the display will show"Low Voltage".
-

SMOK